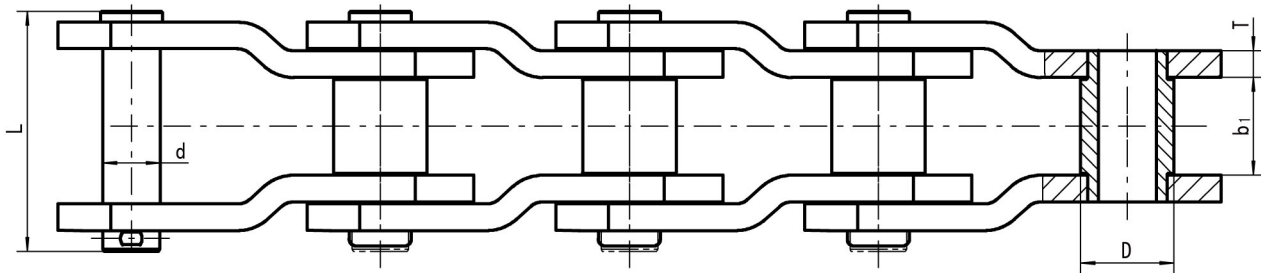
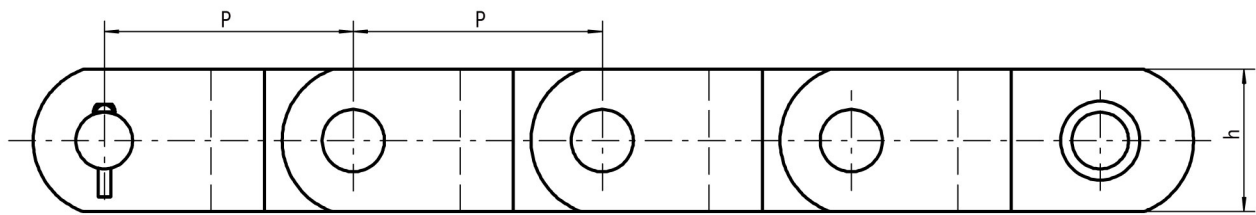


## 弯板套筒链

### Cranked Link Bushed Chains



链号 Chain No.	节距 Pitch P mm	内节内宽 Width between inner Sidebars $b_1$ (min) mm	套筒 外径 Bush diameter D (max) mm	销轴 Pin		链板 Sidebar		最小抗拉 强度 Ultimate tensile strength Qmin kN	许用工作 载荷 Rated working load kN	每米净重 Weight per meter q kg/m
				d mm	L mm	h mm	t/T mm			
HS850	152.4	57.15	50.8	33.27	157	82.6	16	634.7	45.3	36.6
HS886	177.8	68.33	66.68	41.07	172.16	101.6	19.05	1300	84.5	60.2
HS6066	152.4	75.8	76.2	44.45	184	120.7	19.05	1778	124.5	81.3