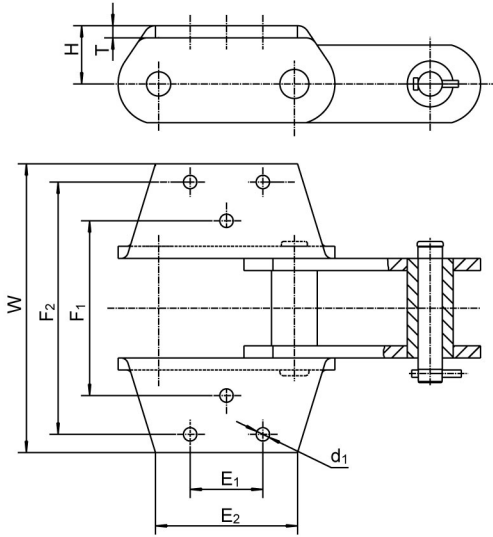


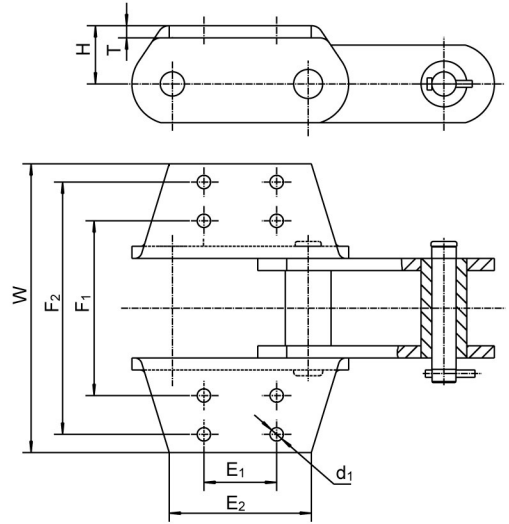


套筒链附件

Attachments of Bushed Chains



K35



K44

K35 附件 K35 Attachment									
链号 Chain No.	E ₁	E ₂	F ₁	F ₂	W	d ₁	H	T	每米净重 Weight per meter q (kg/m)
HS856	63.5	148.3	184.2	298.5	344.4	17.5	47.8	12.7	40.06

K44 附件 K44 Attachment									
链号 Chain No.	E ₁	E ₂	F ₁	F ₂	W	d ₁	H	T	每米净重 Weight per meter q (kg/m)
HS857	88.9	139.7	177.8	304.8	355.6	14.3	63.5	12.7	56.59
HS859	69.85	150.4	228.6	330.2	381	17.5	76.2	16	87.86
HS958	88.9	146.1	177.8	304.8	347.5	14.3	63.5	12.7	59.56