



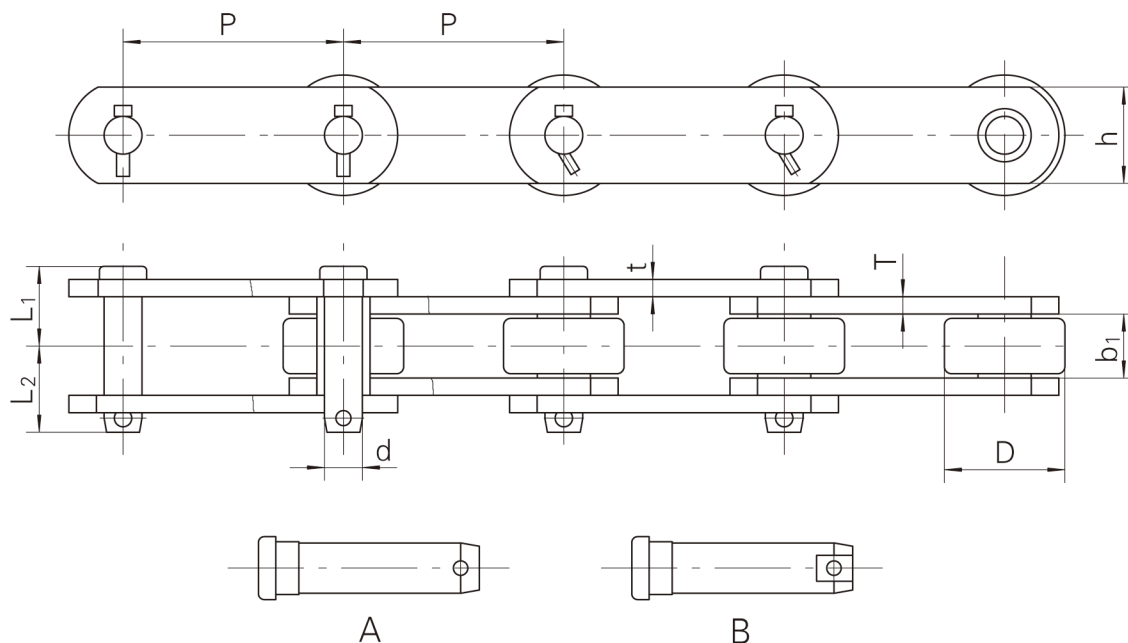
目录 CONTENTS

棕榈油链

Palm Oil Chains

直板型滚子链及附件 Straight-Sidebar Type Roller Chain & Attachment.....	1-7
弯板型滚子链及附件 Cranked Sidebar Type Roller Chain & Attachment.....	8-9
空心销轴型滚子链 Hollow Pin Type Roller Chain.....	10

直板型滚子链及附件 Straight-Sidebar Type Roller Chain & Attachment

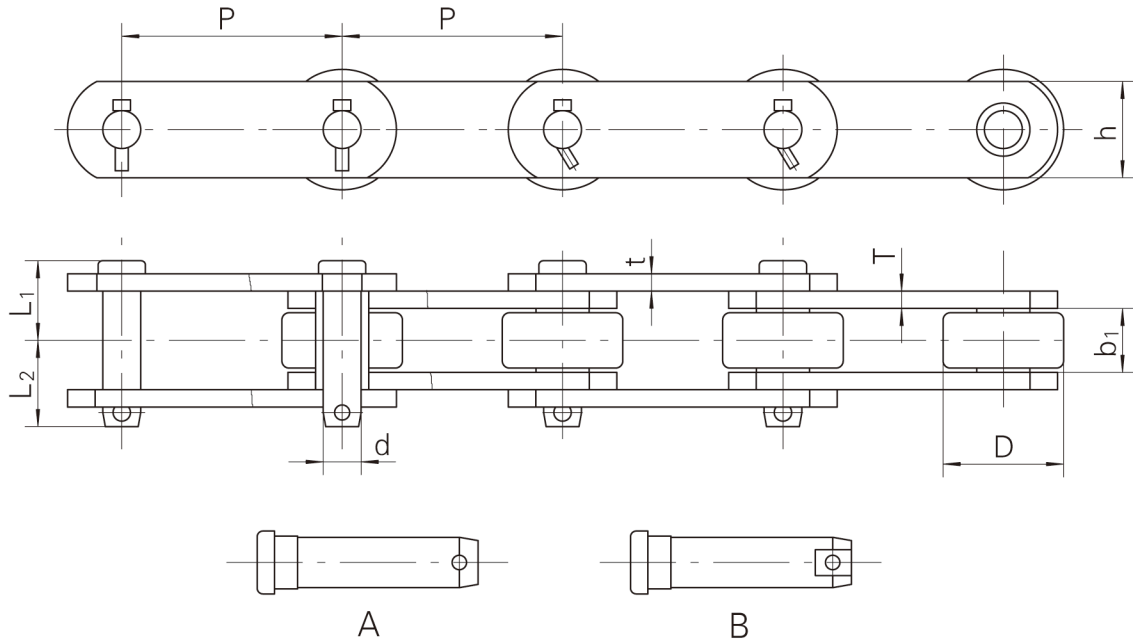


链号	节距	内节内宽	滚子外径	销轴				链板		最小抗拉强度	每米重量
Chain No.	Pitch	Width between Inner Sidebars	Roller Diameter	Pin				Sidebar		Ultimate Tensile Strength	Weight per Meter
	P	b ₁ (min)	D (max)	d	L ₁	L ₂	Type	h	t/T	F _u (min)	q
	mm	mm	mm	mm	mm	mm		mm	mm	kN	kg/m
B3076	76.2	15.2	31.75	13.97	21.4	26.6	A	25.8	4	33.4	3.7
B9503	76.71	31	30	14.12	33.8	40.8	B	38.1	6.4	155	8.76
T3067H	77.9	39.5	41.4	19.05	44.4	43.4	B	57	9.5	490	23.03
*SS39	78.1	37.8	31.75	15.88	41.8	46.3	B	38.1	8	213	10.4
B4075	101.6	15.2	31.75	13.97	21.4	26.6	A	25.8	4	33.4	3.17
K-S150040R-S	101.6	18.4	47.6	11.1	23.6	27.9	B	38.1	4.5/6.4	145.8	6.87
4x18000	101.6	19	47.6	19	23.2	26.8	A	40	5	80	6.89
*B1016H	101.6	19	47.63	19.05	27.7	34.3	A	38.1	6.4	135	8.21
ES4P23	101.6	19.05	47.63	19.05	25.2	30.8	B	38.1	5.1	95	7.29
ES90	101.6	21.4	47.6	11.1	25	29.9	B	32	4.9	100	6.18
PM90R	101.6	22	47.6	11.1	23.5	27.7	B	32	4.5	95	5.8
US90R	101.6	30.1	50.8	11.11	28.4	28.6	B	31.8	4.9	72.3	7.77
PM94R	101.6	30	50.8	14.27	32	36.7	B	38.1	6.4	158	9.88
PM94RA	101.6	23.5	48	14.27	28.6	33.6	B	38.1	6.4	158	8.54

* 链条销轴与套筒有碳钢和不锈钢两种材质。

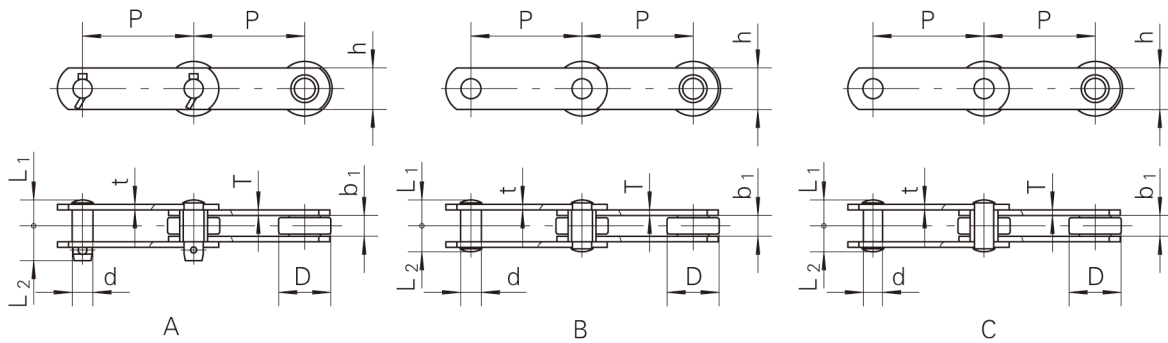
* Chains: there are two kinds of materials for pin and bushing, which are carbon steel and stainless steel.

直板型滚子链及附件 Straight-Sidebar Type Roller Chain & Attachment

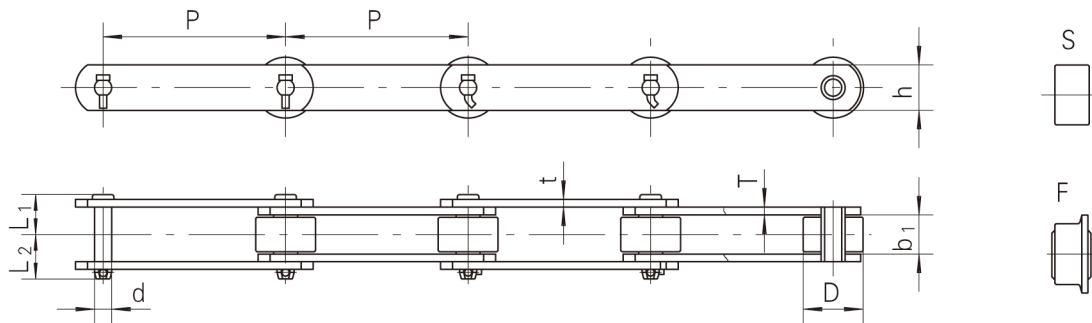


链号	节距	内节内宽	滚子外径	销轴				链板		最小抗拉强度	每米重量
Chain No.	Pitch	Width Between Inner Sidebars	Roller Diameter	Pin				Sidebar		Ultimate Tensile Strength	Weight per Meter
	P	b ₁ (min)	D(max)	d	L ₁	L ₂	Type	h	t/T	Fu(min)	q
	mm	mm	mm	mm	mm	mm		mm	mm	kN	kg/m
B5326H	152.4	19	47.5	19.05	24.9	31.6	A	38.1	5	88.9	5.78
ES6P21	152.4	19.05	47.63	19.05	25.2	30.8	A	38.1	5.1	95	5.89
B5289	152.4	25	66.8	22.07	30.5	37.1	A	50.8	6.4	178	11.35
B5289H	152.4	25	66.8	22.07	33.8	40.6	A	50.8	8	290	13.03
6x30000	152.4	25.4	56.7	26.9	33.9	40.9	A	50.8	6	133	10.36
ES6P36	152.4	25.4	66.7	26.9	37.1	43.9	A	50.8	7.8	215	13.43
ES6P36A	152.4	25.4	66.7	26.9	36.4	39.6	A	50.8	6.4/7.8	250	12.66
ES6P36C	152.4	25.4	66.7	26.9	30.7	40.5	A	50.8	5.1/7.1	200	11.52
ES6P36H	152.4	25.4	66.7	26.9	38.3	45.5	A	50.8	7.8/9	266.7	14.07
B5257	152.4	36	34.95	17.4	39.7	46.8	B	44.45	8	223	9.19
B5305	160	37.8	70	17.48	37.2	43.9	A	50.8	6.4	245	13.55
8*45000	203.2	38.1	88.9	30	44.1	43.9	A	61	8	280	18.98

直板型滚子链及附件 Straight-Sidebar Type Roller Chain & Attachment



链号	节距	内节内宽	滚子外径	销轴				链板		最小抗拉强度	每米重量
Chain No.	Pitch	Width between Inner Sidebars	Roller Diameter	Pin				Sidebar		Ultimate Tensile Strength	Weight per Meter
	P	b ₁ (min)	D(max)	d	L ₁	L ₂	Type	h	t/T	Fu(min)	q
	mm	mm	mm	mm	mm	mm		mm	mm	kN	kg/m
4*15000	101.6	18.9	47.63	19.05	24.5	30.1	C	40	5/6	66.7	7.44
KT818EB	101.6	19.05	47.63	19.05	24.2	30.3	A	38.1	5.1	97.8	7.1
KE818EB-R	101.6	19.05	47.63	19.05	24.2	24.2	B	38.1	5.1	97.8	6.96
RF4*21000	101.6	19.05	47.63	19.05	22.5	28	C	39.4	4/5.1	116	6.574
4x30000	101.6	25.4	66.7	28	28.8	28.8	B	50.8	5.1/7.1	133	14.07
6x45000	152.4	38.1	88.9	31.8	43	43	B	61	9	200	32.43
RF6*50000	152.4	25.4	66.7	26.9	30.25	36.75	C	50.8	6.4	222	11.38

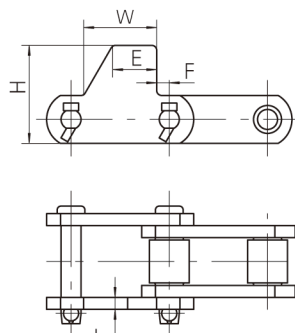


链号	节距	内节内宽	滚子外径	销轴			链板		最小抗拉强度	每米重量	
Chain No.	Pitch	Width between Inner Sidebars	Roller Diameter	Pin			Sidebar		Ultimate Tensile Strength	Weight per Meter	
	P	b ₁ (min)	D(max)	d	L ₁	L ₂	h	t/T	Fu(min)	q	
	mm	mm	mm	mm	mm	mm	mm	mm	kN	S	F
RF604R	152.4	30	50.8	14.27	31.9	36.8	38.1	6.4	158	7.85	8.3
604RA	152.4	33	50.8	14.27	33.5	38.2	38.1	6.4	158	8.22	8.67

直板型滚子链及附件

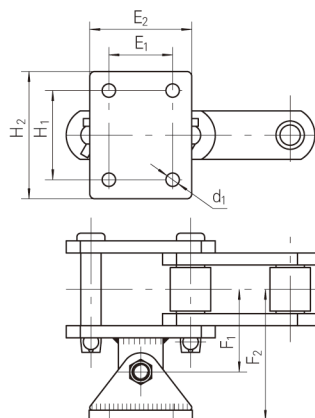
Straight-Sidebar Type Roller Chain & Attachment

F1附件
F1 Attachment



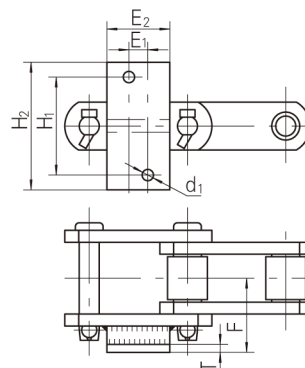
附件号	链号	F	W	E	T	H
Att. No.	Chain No.	mm	mm	mm	mm	mm
F1	SS39	10	58	35	8	78

AS20附件
AS20 Attachment



附件号	链号	H ₁	H ₂	E ₁	E ₂	F ₁	F ₂	d ₁	T
Att. No.	Chain No.	mm	mm	mm	mm	mm	mm	mm	mm
AS20	SS39	70	100	50	80	62.7	100.7	10.5	8

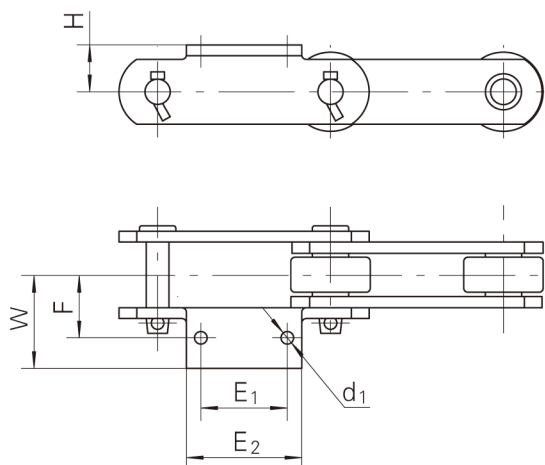
A20附件
A20 Attachment



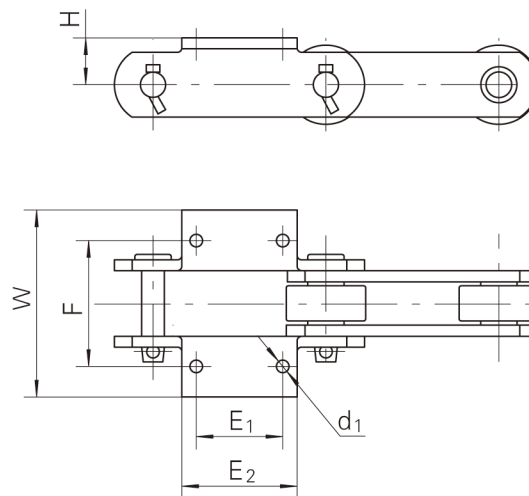
附件号	链号	H ₁	H ₂	E ₁	E ₂	F	d ₁	T
Att. No.	Chain No.	mm	mm	mm	mm	mm	mm	mm
A20	SS39	78	101.6	15	50	53	9	6.4

直板型滚子链及附件 Straight-Sidebar Type Roller Chain & Attachment

A2附件
A2 Attachment



K2附件
K2 Attachment

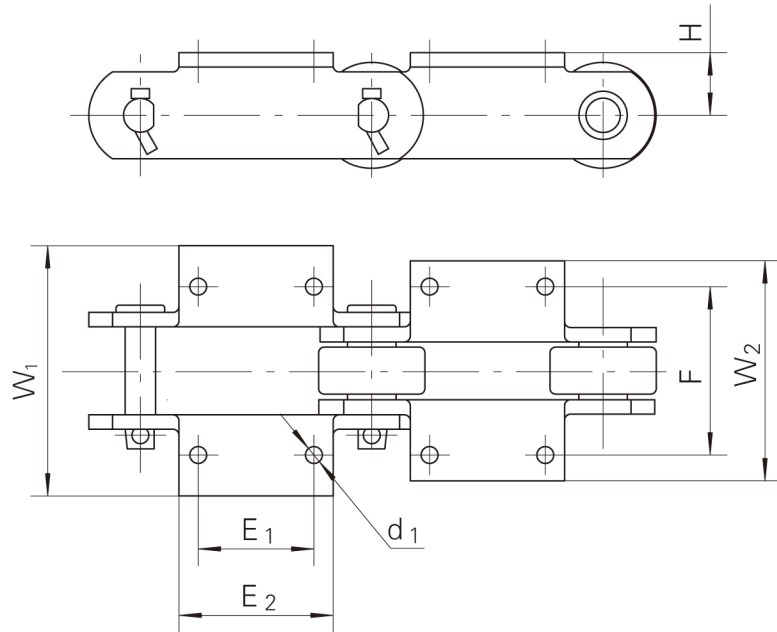


附件号	链号	H	E ₁	E ₂	d ₁	F	W
Att. No.	Chain No.	mm	mm	mm	mm	mm	mm
A2	PM90R	31.8	31.8	63.5	11	44.5	61.5
		16	31.8	63.5	11	44.5	61.5
	PM94R	31.8	31.8	63.5	10.7	44.5	62
		19.05	31.8	63.5	10.7	44.5	62
	KT818EB	38	31.8	63.5	10.7	44.5	68
		19.05	31.8	63.5	10.7	44.5	62.5
	4*30000	38	31.8	56	12.3	54	78.5
	RF604R	19.05	50.8	90	12	50.5	67
ES6P36	38	57.2	107	12.3	54	78.5	

附件号	链号	H	E ₁	E ₂	d ₁	F	W
Att. No.	Chain No.	mm	mm	mm	mm	mm	mm
K2	PM90R	31.8	31.8	63.5	11	89	123
		16	31.8	63.5	11	89	123
	PM94R	31.8	31.8	63.5	10.7	89	124
		19.05	31.8	63.5	10.7	89	124
	KT818EB	38	31.8	63.5	10.7	89	136
		19.05	31.8	63.5	10.7	89	135
	4*30000	38	31.8	56	12.3	108	157
	RF604R	19.05	50.8	90	12	101	134
ES6P36	38	57.2	107	12.3	108	157	

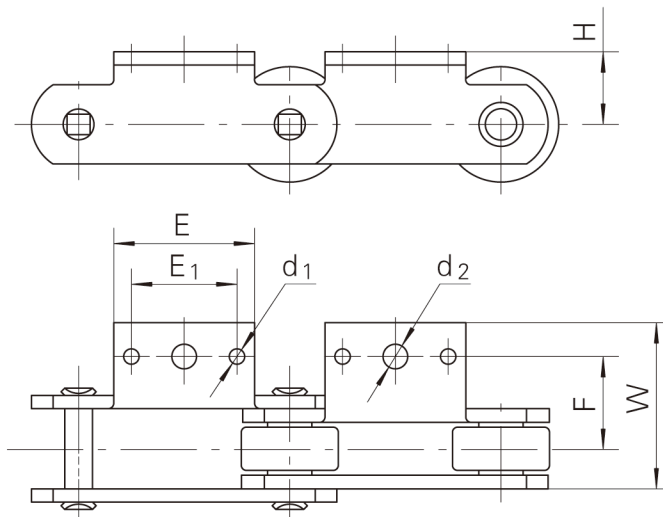
直板型滚子链及附件 Straight-Sidebar Type Roller Chain & Attachment

K2附件
K2 Attachment



附件号	链号	H	E ₁	E ₂	d ₁	F	W ₁	W ₂
Att. No.	Chain No	mm	mm	mm	mm	mm	mm	mm
K2	T3067H	44.5	76.2	135	14.3	127	170	170
	B5257	38.1	60	101.6	15	120	187.3	170.2

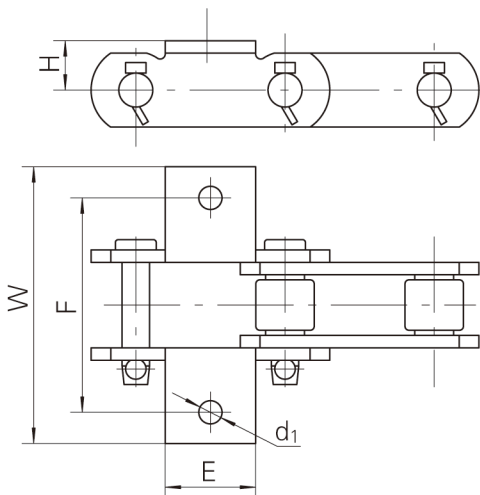
A3附件
A3 Attachment



附件号	链号	H	E ₁	E	d ₁	d ₂	F	W
Att. No.	Chain No	mm	mm	mm	mm	mm	mm	mm
A3	4x15000	31.75	31.75	67.5	10.71	13.89	44.45	75.8
	KT818EB	38	31.8	63.5	10.7	13	44.5	68

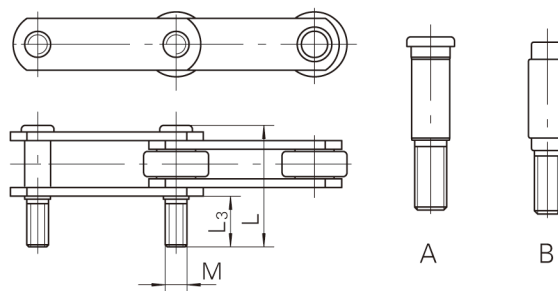
直板型滚子链及附件 Straight-Sidebar Type Roller Chain & Attachment

K1 附件
K1 Attachment



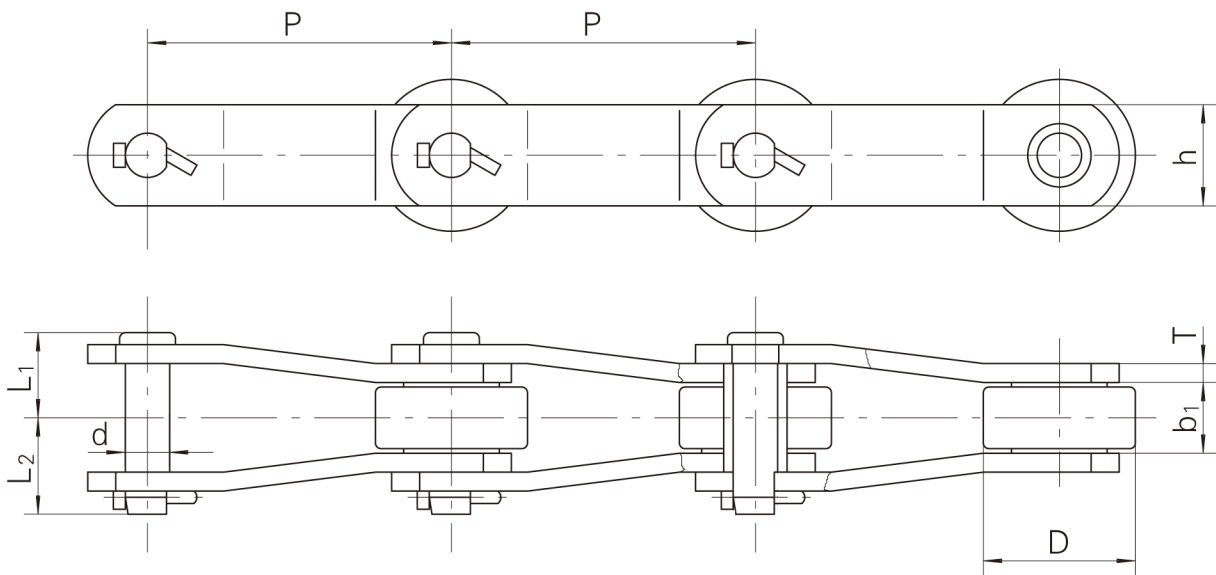
附件号	链号	H	W	F	E	d ₁
Att. No.	Chain No.	mm	mm	mm	mm	mm
K1	B9503	25.4	142.35	111.25	46.5	11.94

SD 附件
SD Attachment



附件号	链号	L	L ₃	M	Type
Att. No.	Chain No	mm	mm	mm	
SD	B1016H	86.6	36	M16	A
	ES4P23	81.8	36	M16	A
	ES4P23 · N3	75.4	30	M16*1.5	A
	PM94R	92.5	32	M12	A
	ES6P36	110.5	44	M24	A
	ES6P36A	112.5	47.7	M24	A
	ES6P36C	100.7	44	M24	A
	ES6P36H	114.3	45	M24	A
	ES6P21	75.4	30	M16*1.5	A
	B5289	96.8	39.7	M20	A
	B5289H	114.5	51	M20	A
	KT818EB	75.4	31	M16	B
	RF6*50000	105.4	45	M24	A
	6*45000	131.5	50	M27	B
	8*45000	140	62	M27	A

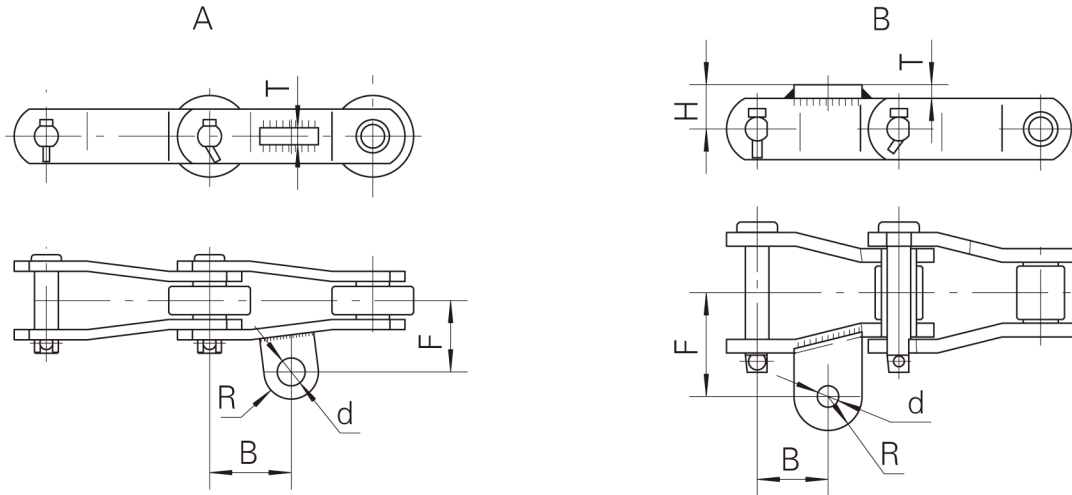
弯板型滚子链及附件 Cranked Sidebar Type Roller Chain & Attachment



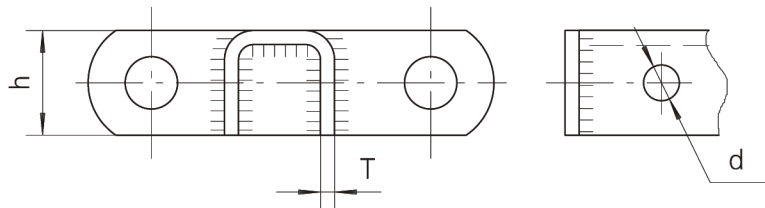
链号	节距	窄端内宽	滚子外径	销轴			链板		最小抗拉强度	每米重量
Chain No.	Pitch	Inner Width	Roller diameter	Pin			Sidebar		Ultimate Tensile Strength	Weight per Meter
	P	b ₁ min	D(max)	d	L ₁	L ₂	h	T	Fu(min)	q
	mm	mm	mm	mm	mm	mm	mm	mm	kN	kg/m
B5029	66.17	28	22.23	11.1	31.7	35.1	28.6	6.4	122.8	5.41
B5234	152.4	34.9	76.2	22.3	43.9	53.4	50.8	9.5	355.6	17.93

弯板型滚子链及附件
Cranked Sidebar Type Roller Chain & Attachment

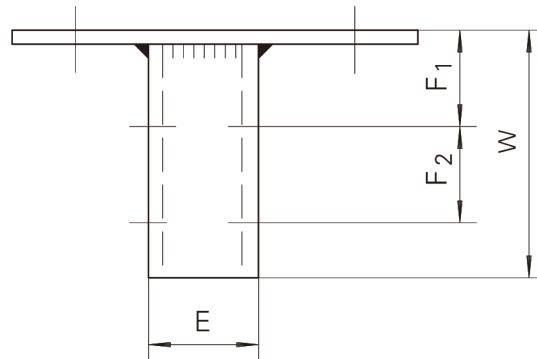
A1附件
A1 Attachment



附件号	链号	H	T	B	F	R	d	Type
Att. No.	Chain No	mm	mm	mm	mm	mm	mm	
A1	B5234	/	15	76.2	66.7	25.4	20.64	A
	B5029	20.7	6.4	33.08	48.4	15.875	10	B

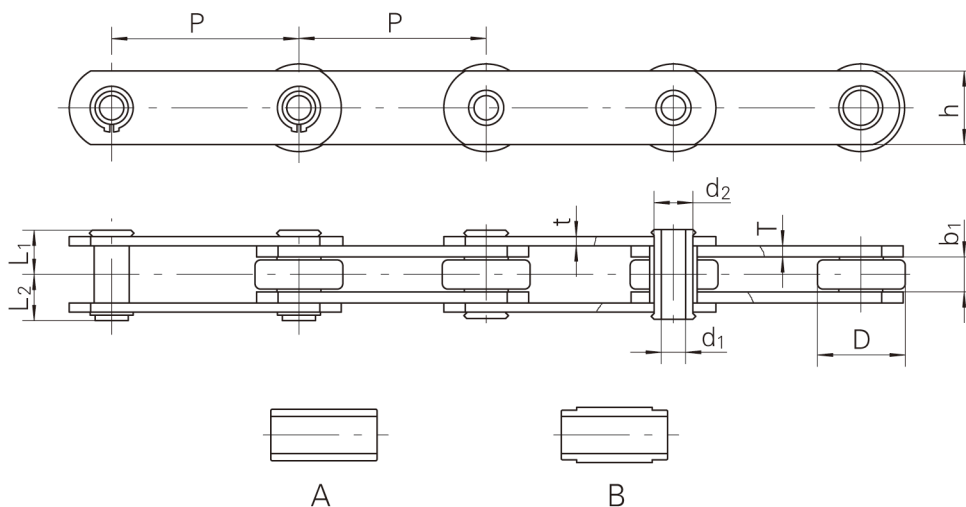


LA2附件
LA2 Attachment



附件号	链号	h	T	F ₁	F ₂	W	d
Att. No.	Chain No	mm	mm	mm	mm	mm	mm
LA2	ES4P23	40	5.1	35.1	35	85	13

空心销轴型滚子链 Hollow Pin Type Roller Chain



链号	节距	内节内宽	滚子外径	销轴					链板		最小抗拉强度	每米重量
Chain No.	Pitch	Width Between Inner Sidebars	Roller Diameter	Pin					Sidebar		Ultimate Tensile Strength	Weight per Meter
	P	b ₁ (min)	D(max)	d ₁	d ₂	L ₁	L ₂	Type	h	t/T	F _u (min)	q
	mm	mm	mm	mm	mm	mm	mm		mm	mm	kN	kg/m
4x15000HP	101.6	18.9	47.63	13.1	19.05	24.2	24.8	A	40	5/6	66.7	6.92
4x21000HP	101.6	19.05	47.63	13.1	19.05	23	24	B	39.4	5.1	95	6.56
RF4*21000HP	101.6	19.05	47.63	13.2	19.05	23.05	29.45	B	39.4	5.1	95	6.52
4*30000HP	101.6	25.4	66.7	19.56	25.8	28.8	29.4	B	50.8	5.1/7.1	200	12.723
6*35000HP	152.4	25.4	66.7	20.1	25.8	27.7	28.3	B	50.8	5.1/6	177.8	9.52
6x36000HP	152.4	25.4	66.7	20.1	26.9	28.8	29.4	B	50.8	5.1/7.1	200	10.1
IK6*36000HP	152.4	25.4	66.7	20.1	26.9	29.3	31.6	B	60.8	7.1/7.1	200	11
RF6*36000HP	152.4	25.4	66.7	20.1	26.9	29.4	30	A	50.8	6.4/6.4	200	10.35
6x36000HP-N1	152.4	25.4	66.7	20.1	26.9	29.3	31.4	B	50.8	7.1/7.1	200	11.02
6x36000HHP	152.4	25.4	66.7	20.1	26.9	30.8	31.6	B	50.8	6.4/7.8	220	11.06
8x45000HP	203.2	38.1	88.9	22.85	30	40	44.2	A	61	8	280	17.27